

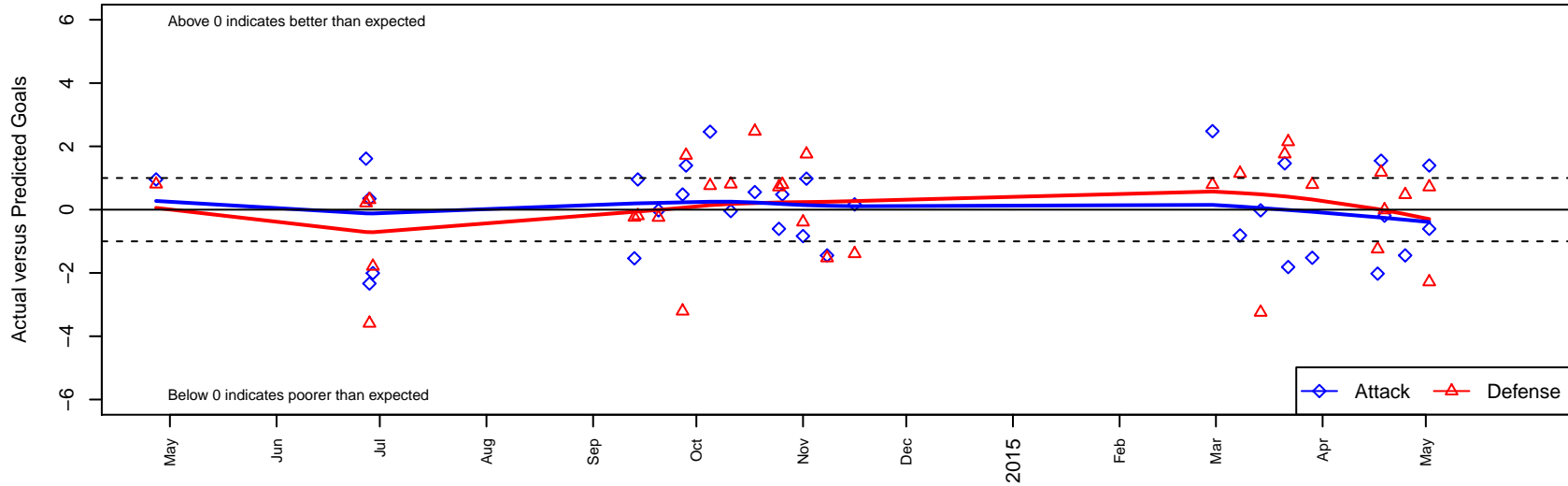
Central WA SA Grey B01

Central WA Soccer Academy
 Yakima, WA
 B01 total strength=1089
 attack=3.84 defense=1.93
 fall league = PSPL Premier U13
 spr league = Spr PSPL SuperLeague U13
 notes= Cuevas 2013, 2014

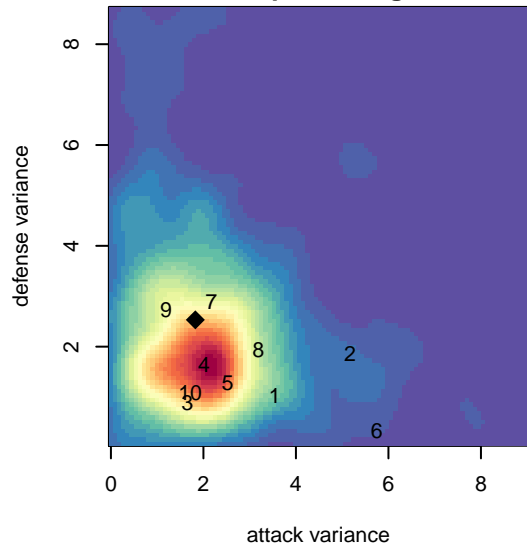
alt names used:
 CWSA B01 Grey Cuevas
 Academy-Cuevas
 CWSA B01 Grey Cuevas
 CWSA B01 GREY - CUEVAS (WA)

Venues played:
 2013 WA Cup BU12 Gold/Silver U12
 2014 Yakima Mid Summer Classic BU13
 2014 PSPL Premier U13
 2014 Spr PSPL SuperLeague U13
 2014 WA Cup BU13 Gold/Platinum U13

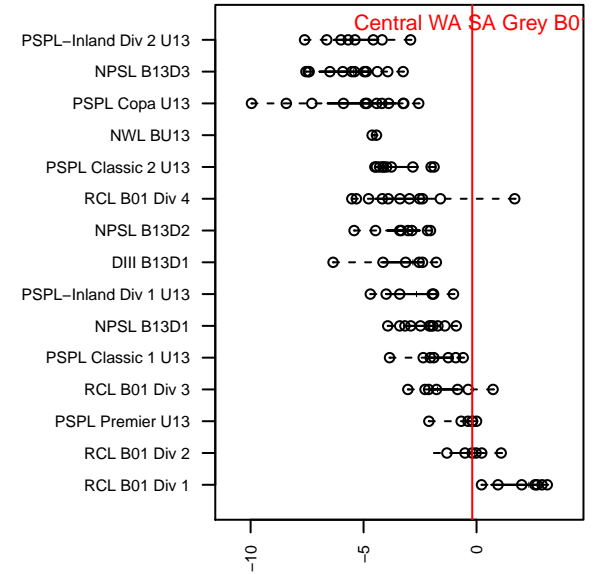
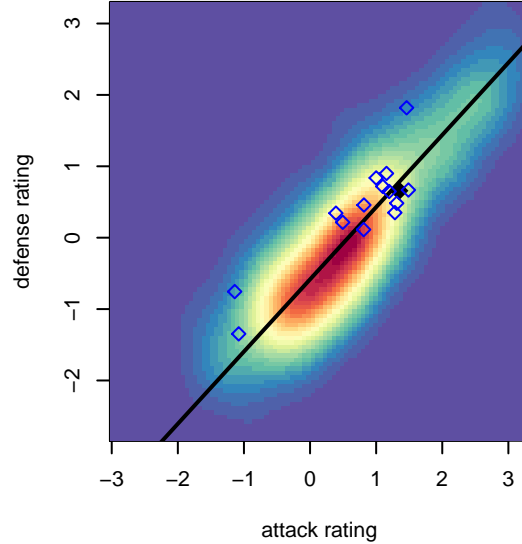
Central WA SA Grey B01
 Dots are actual minus expected GF (blue circles) and GA (red triangles).
 Blue line is smoothed change in attack strength. Red is smoothed change in defense strength.



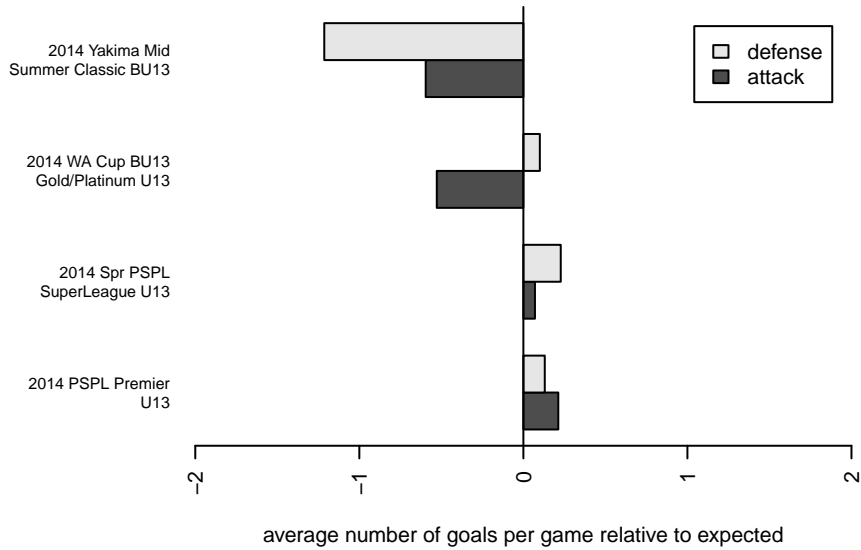
**attack and defense variance (black dot)
relative to other teams
and top 10 in region**



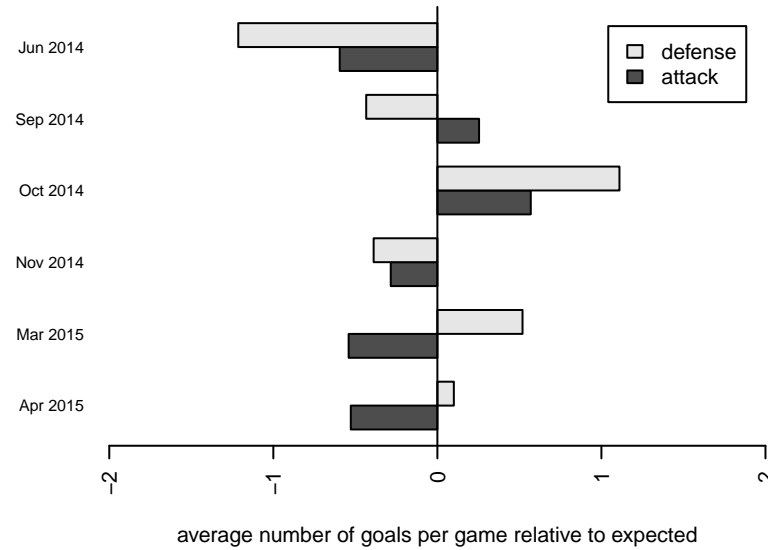
**attack and defense rating
relative to others at age
and all opponents in last 13 months**



Performance relative to 13 month average



Performance relative to 13 month average



date	home		away		venue	pred.home	pred.away
2015-05-02	Sting SC Valencia B01	1	Central WA SA Grey B01	3	2014 Spr PSPL SuperLeague U13	1.72	1.61
2015-05-02	Sting SC Valencia B01	4	Central WA SA Grey B01	1	2014 Spr PSPL SuperLeague U13	1.72	1.61
2015-04-25	Central WA SA Grey B01	1	Cobra Aguilitas B01	2	2014 WA Cup BU13 Gold/Platinum U13	2.45	2.47
2015-04-19	Kent United White B01	1	Central WA SA Grey B01	3	2014 WA Cup BU13 Gold/Platinum U13	0.99	3.19
2015-04-18	Central WA SA Grey B01	4	Seattle Celtic Green B01	0	2014 WA Cup BU13 Gold/Platinum U13	2.45	1.18
2015-04-17	Central WA SA Grey B01	0	NW United Premier B01	3	2014 WA Cup BU13 Gold/Platinum U13	2.02	1.76
2015-03-29	Central WA SA Grey B01	1	RSA Elite B01	1	2014 Spr PSPL SuperLeague U13	2.52	1.79
2015-03-22	Dragons FC B01	0	Central WA SA Grey B01	1	2014 Spr PSPL SuperLeague U13	2.14	2.81
2015-03-21	ISC Gunners A B01	0	Central WA SA Grey B01	3	2014 Spr PSPL SuperLeague U13	1.76	1.54
2015-03-14	Central WA SA Grey B01	2	NW United Premier B01	5	2014 Spr PSPL SuperLeague U13	2.02	1.76
2015-03-08	Central WA SA Grey B01	2	Dragons FC B01	1	2014 Spr PSPL SuperLeague U13	2.81	2.14
2015-02-28	RSA Elite B01	1	Central WA SA Grey B01	5	2014 Spr PSPL SuperLeague U13	1.79	2.52
2014-11-16	Central WA SA Grey B01	2	Tynecastle FC B01	3	2014 PSPL Premier U13	1.83	1.61
2014-11-08	Central WA SA Grey B01	1	Cobra Aguilitas B01	4	2014 PSPL Premier U13	2.45	2.47
2014-11-02	NW United Premier B01	0	Central WA SA Grey B01	3	2014 PSPL Premier U13	1.76	2.02
2014-11-01	Tynecastle FC B01	2	Central WA SA Grey B01	1	2014 PSPL Premier U13	1.61	1.83
2014-10-26	Central WA SA Grey B01	3	RSA Elite B01	1	2014 PSPL Premier U13	2.52	1.79
2014-10-25	Sting SC Valencia B01	1	Central WA SA Grey B01	1	2014 PSPL Premier U13	1.72	1.61
2014-10-18	Cobra Aguilitas B01	0	Central WA SA Grey B01	3	2014 PSPL Premier U13	2.47	2.45
2014-10-11	Central WA SA Grey B01	3	Emerald City FC Green B01	0	2014 PSPL Premier U13	3.04	0.81
2014-10-05	Central WA SA Grey B01	4	ISC Gunners A B01	1	2014 PSPL Premier U13	1.54	1.76
2014-09-28	Central WA SA Grey B01	3	Sting SC Valencia B01	0	2014 PSPL Premier U13	1.61	1.72
2014-09-27	RSA Elite B01	5	Central WA SA Grey B01	3	2014 PSPL Premier U13	1.79	2.52
2014-09-20	Central WA SA Grey B01	2	NW United Premier B01	2	2014 PSPL Premier U13	2.02	1.76
2014-09-14	Emerald City FC Green B01	1	Central WA SA Grey B01	4	2014 PSPL Premier U13	0.81	3.04
2014-09-13	ISC Gunners A B01	2	Central WA SA Grey B01	0	2014 PSPL Premier U13	1.76	1.54
2014-06-29	HSA Blue Thunder B01	2	Central WA SA Grey B01	12	2014 Yakima Mid Summer Classic BU13	0.21	14.01
2014-06-28	Crossfire Yakima B01	6	Central WA SA Grey B01	1	2014 Yakima Mid Summer Classic BU13	2.41	0.65

date	home		away		venue	pred.home	pred.away
2014-06-28	Central WA SA Grey B01	1	Challengers -Unk B01	1	2014 Yakima Mid Summer Classic BU13	3.33	1.31
2014-06-27	FWFC White B01	0	Central WA SA Grey B01	9	2014 Yakima Mid Summer Classic BU13	0.21	7.39
2014-04-27	Central WA SA Grey B01	4	Emerald City FC Green B01	0	2013 WA Cup BU12 Gold/Silver U12	3.04	0.81